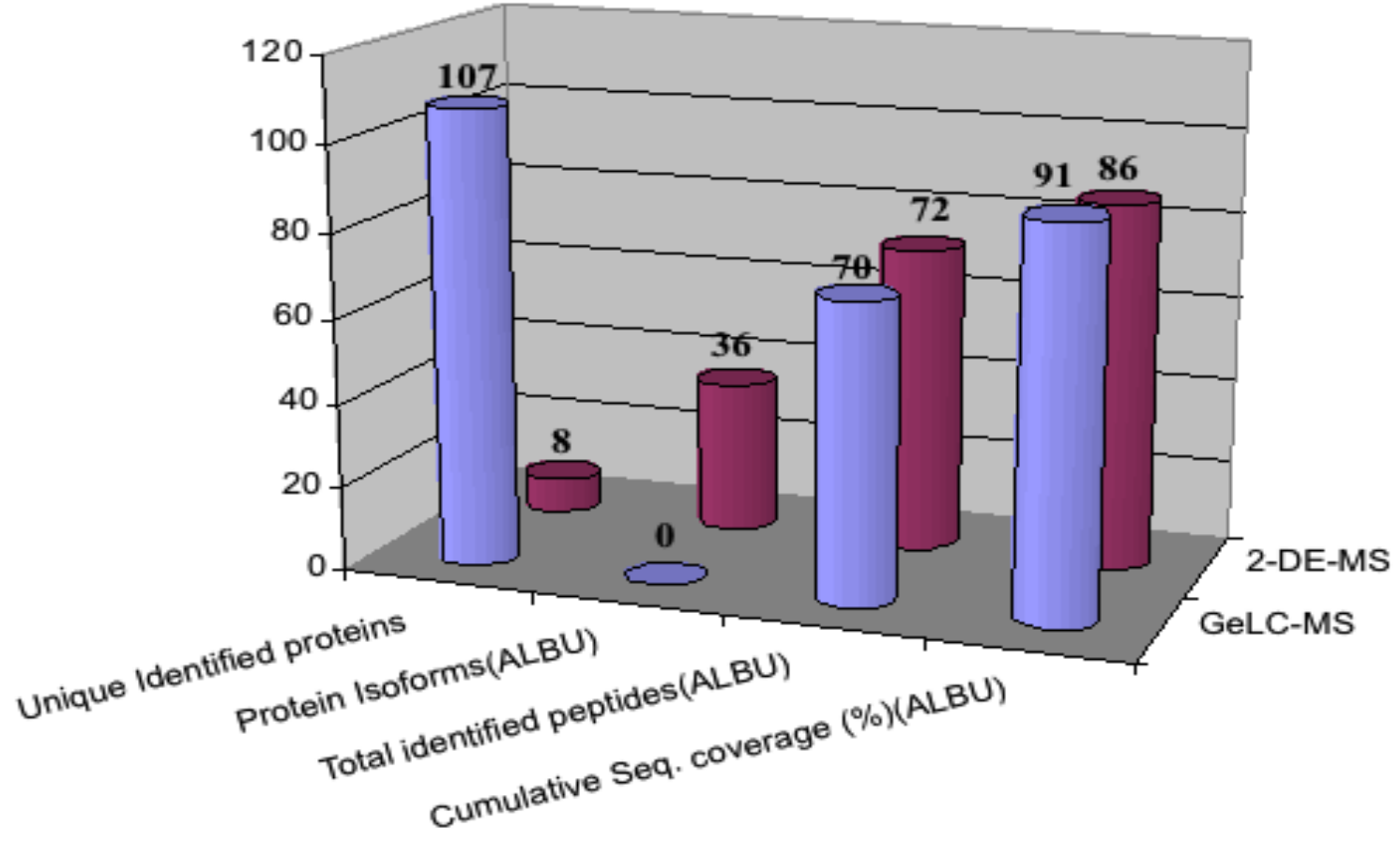


Mass Zone 56-69 kDa

A



B

ALBU: GeLC-MS

ALBU: 2-DE-MS

1 MKWVTFISLL FLFSSAYSRG VFRR **DAHKSE** **VAHREFKDLGE** **ENFKALVLIA**
 51 **FAQYLQQCPF** **EDHVKLVNEV** **TEFAKTCVAD** **ESAENC DKSL** **HTLEFGDKLCT**
 101 **VATLRETYGE** **MADCCAKQEP** **ERNECF LQHK** **DDNPNLPRLV** **RPEVDVMCTA**
 151 **FHDNEETFLK** **KYLYEIARRH** **PYFYAPELLF** **FAKRYKAAFT** **ECCQAADKAA**
 201 **CLLPKLDEL R** **DEGKASSAKQ** **RLKASLQKF** **GERAFKAWAV** **ARLSQRFPKA**
 251 **EFAEVSKLVT** **DLTKVHTECC** **HGDLLECADD** **RADLAKYICE** **NQDSISSK LK**
 301 **ECCEKPLLEK** **SHCIAEVEND** **EMPADLPSLA** **ADFVESK DVC** **KNYAEAKDVF**
 351 **LGMFLYEYAR** **RHPDYSVLL** **LRLAKTYETT** **LEKCCAAADP** **HECYAKVFDE**
 401 **FKPLVEEPQN** **LIKQNC ELF E** **QLGEYKFQNA** **LLVRYTKKVP** **QVSTPTLVEV**
 451 **SRNLGKVGSK** **CCKHPEAKRM** **PCAEDYLSV V** **LNQLCVLHEK** **TPVSDRVTK C**
 501 **CTESLVNRRP** **CFSALEVDET** **YVPKEFNAET** **FTFHADICTL** **SEKERQIKKQ**
 551 **TALVELVKHK** **PKATKEQLKA** **VMDDFAAFVE** **KCKKADDKET** **CFAEEGK KLV**
 601 **AASQAALGL**

1 MKWVTFISLL FLFSSAYSRG VFRR **DAHKSE** **VAHREFKDLGE** **ENFKALVLIA**
 51 **FAQYLQQCPF** **EDHVKLVNEV** **TEFAKTCVAD** **ESAENC DKSL** **HTLEFGDKLCT**
 101 **VATLRETYGE** **MADCCAKQEP** **ERNECF LQHK** **DDNPNLPRLV** **RPEVDVMCTA**
 151 **FHDNEETFLK** **KYLYEIARRH** **PYFYAPELLF** **FAKRYKAAFT** **ECCQAADKAA**
 201 **CLLPKLDEL R** **DEGKASSAKQ** **RLKASLQKF** **GERAFKAWAV** **ARLSQRFPKA**
 251 **EFAEVSKLVT** **DLTKVHTECC** **HGDLLECADD** **RADLAKYICE** **NQDSISSK LK**
 301 **ECCEKPLLEK** **SHCIAEVEND** **EMPADLPSLA** **ADFVESK DVC** **KNYAEAKDVF**
 351 **LGMFLYEYAR** **RHPDYSVLL** **LRLAKTYETT** **LEKCCAAADP** **HECYAKVFDE**
 401 **FKPLVEEPQN** **LIKQNC ELF E** **QLGEYKFQNA** **LLVRYTKKVP** **QVSTPTLVEV**
 451 **SRNLGKVGSK** **CCKHPEAKRM** **PCAEDYLSV V** **LNQLCVLHEK** **TPVSDRVTK C**
 501 **CTESLVNRRP** **CFSALEVDET** **YVPKEFNAET** **FTFHADICTL** **SEKERQIKKQ**
 551 **TALVELVKHK** **PKATKEQLKA** **VMDDFAAFVE** **KCKKADDKET** **CFAEEGK KLV**
 601 AASQAALGL

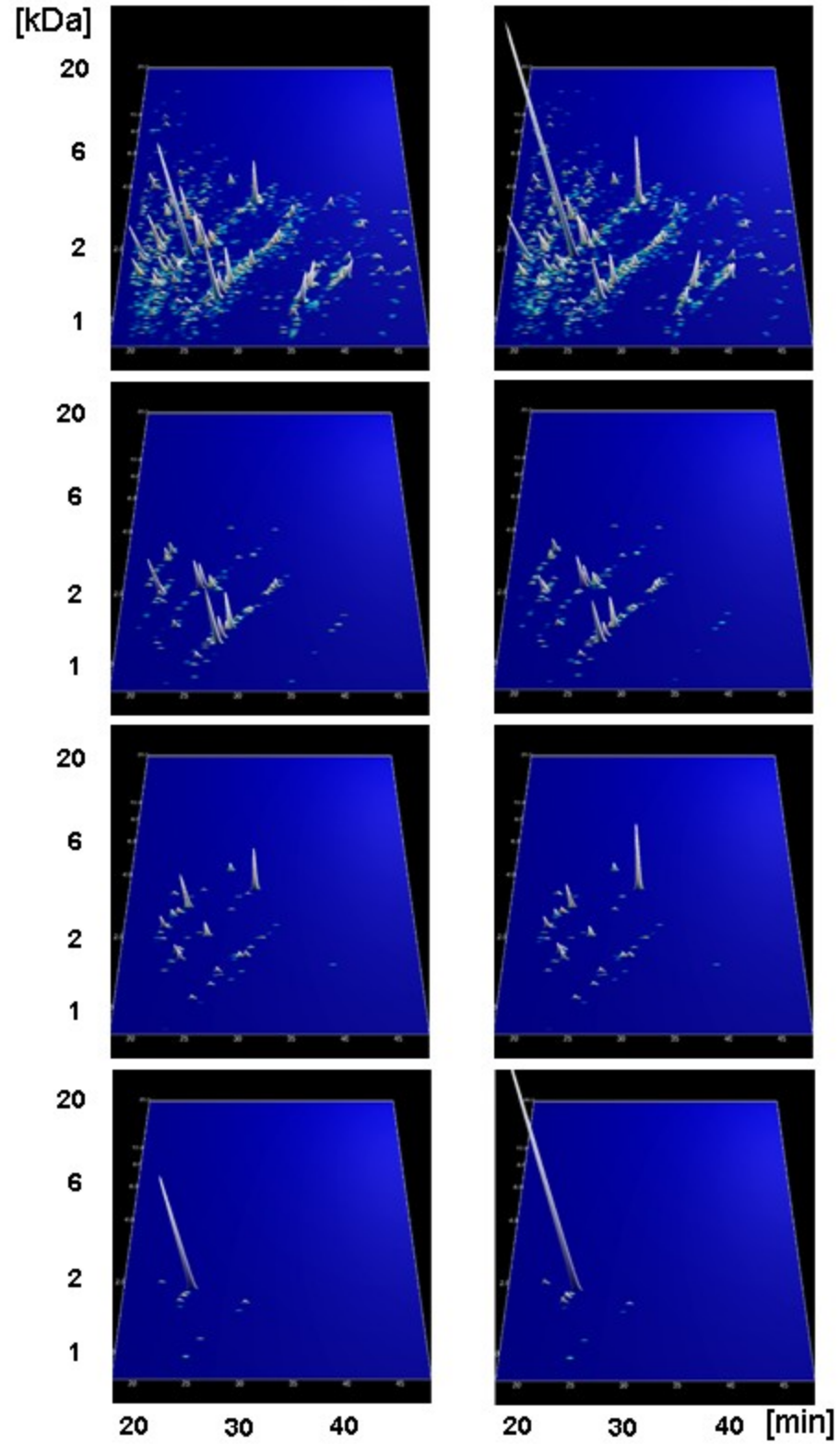
X: unique identifications

A

CE-(ESI)-MS

male

female



B

LC-(ESI)-MS

male

female

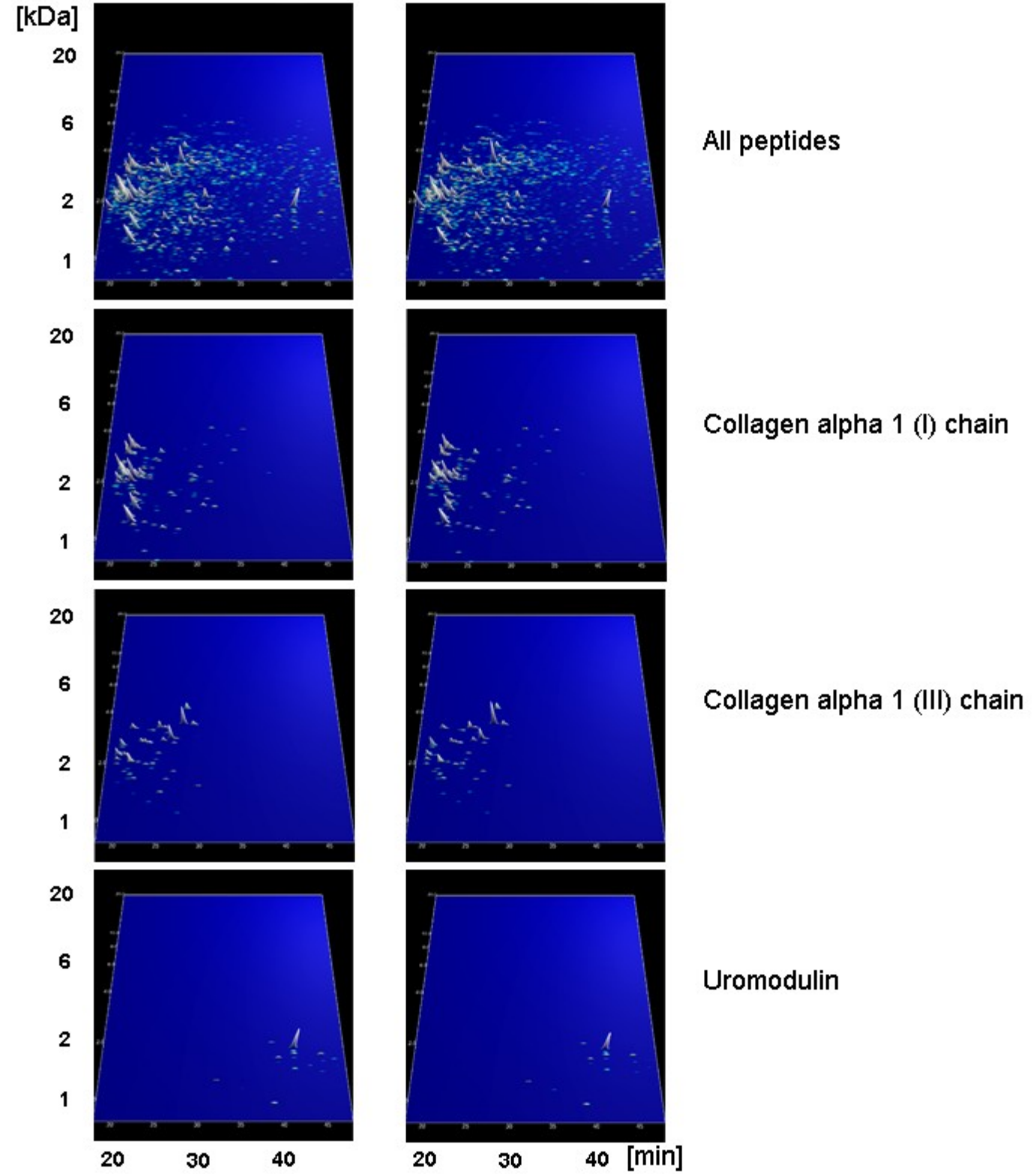


Figure 4

LCMS

CEMS

GeLCMS

2DE

